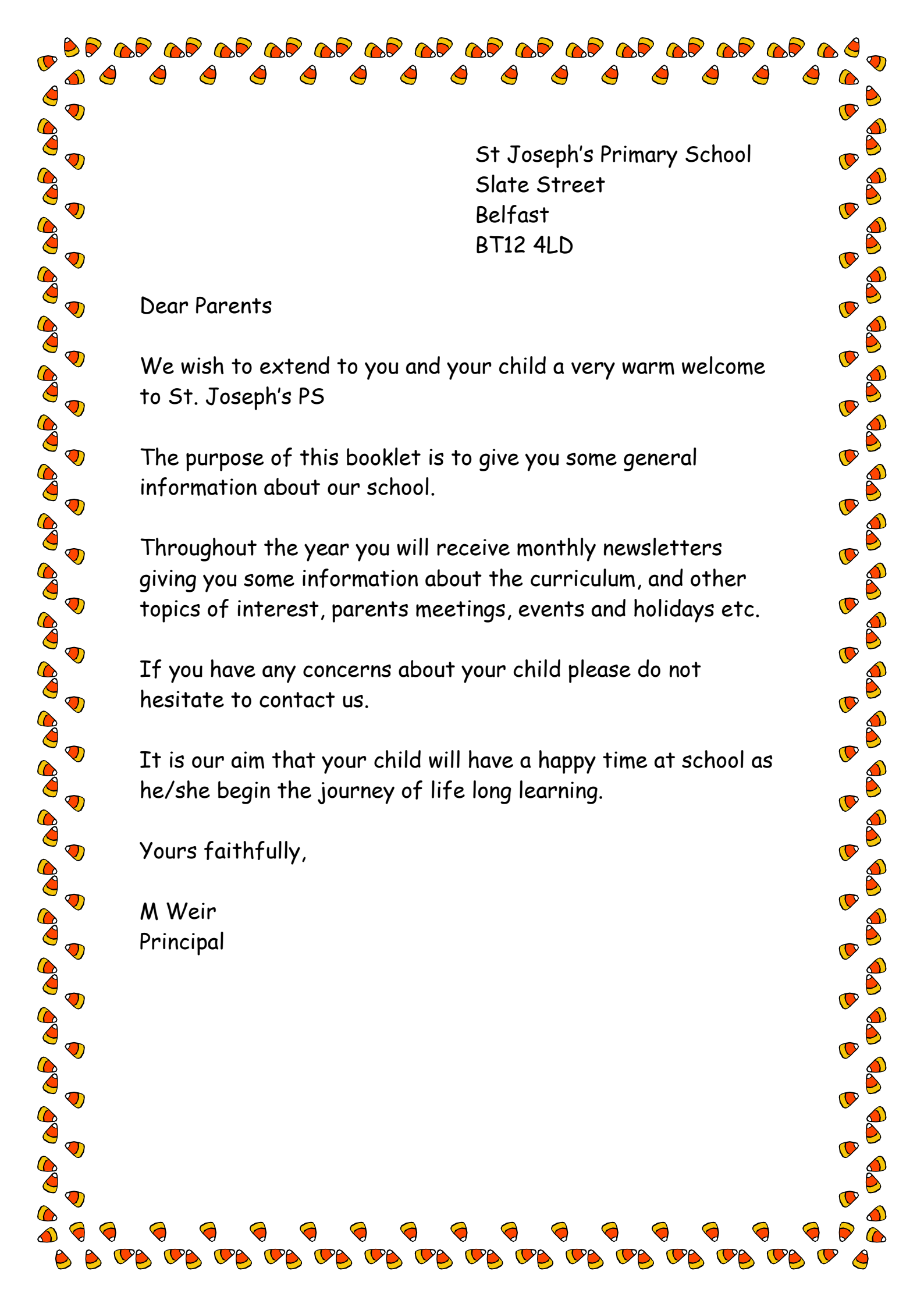


St. Joseph's Primary School



Parents Information Booklet



St Joseph's Primary School
Slate Street
Belfast
BT12 4LD

Dear Parents

We wish to extend to you and your child a very warm welcome to St. Joseph's PS

The purpose of this booklet is to give you some general information about our school.

Throughout the year you will receive monthly newsletters giving you some information about the curriculum, and other topics of interest, parents meetings, events and holidays etc.

If you have any concerns about your child please do not hesitate to contact us.

It is our aim that your child will have a happy time at school as he/she begin the journey of life long learning.

Yours faithfully,

M Weir
Principal



Mission Statement

Through embracing Catholic values, in an atmosphere of inclusivity and care, St Joseph's is committed to outstanding practice in teaching and learning as the gateway to success, personal and community development.

A Vision For All

St Joseph's Primary School is steeped in the Catholic value system which nurtures and develops the unique giftedness of each child and empowers them to reach their potential. It embraces outstanding teaching and learning as a force for positive change and works in partnership with families to develop a community of learning with the child at the centre of a circle of love.

How do we begin?

Settling In

Starting Primary School is a big step for your child and also for you. We aim to make this as smooth as possible.

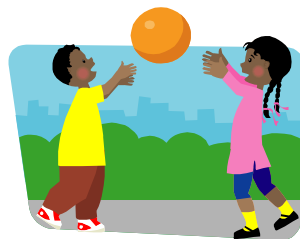
Your child will be gradually settled into a full day over a number of weeks.

We know we can count on your support with this settling in period.

It is important to ensure that children are well rested, have had a good night's sleep and a good breakfast before starting school. This of course is important every school day, but especially important during the first days back when children will need to be as rested and relaxed as a possible.

Tired children tend to be more anxious, impatient and more easily upset and frustrated

A timetable for your child starting school will be sent to you over the summer.



Note

All children must be accompanied by an adult to and from school. If there is going to be a change to the person who regularly collects your child, please let us know in advance either by phone or in writing.

School Hours

P1 - P2, 8.45am - 1.45pm

P3 - P7, 8.45am - 3.00pm (Mon-Thurs)

P3 - P7, 8.45am - 1.45pm (Friday)

Doors open at 8.45am. We encourage you to come into the cloakroom area with your child in order to help your child hang up his/her coat and bag (**only for the first few days** - after that we will be encouraging your child's independence and hang their coats up themselves).

Try to arrive promptly to collect your child; children can become upset if they are left waiting. It is also important for children to build happy relationships with their classmates and staff in an informal setting before school starts.

In the interests of security, the door will be open from 8.45 to 9.00 and then locked. The official start time for the School is 8.45am.

The school operates a FREE Breakfast Club from 8.15am until 8.45am daily.

There are also a variety of After School clubs for children to access.



What will my child learn?

We at St Joseph's strive to offer a broad and balanced programme to meet your child's physical, social, emotional and cognitive needs.

This child centred, play based curriculum allows for opportunities for children to make choices and develop independent skills.

In accordance with Curriculum Guidance for Primary Education this will include the following areas.

- ★ Personal Development & Mutual Understanding (PDMU)
- ★ The Arts
- ★ Language & Literacy
- ★ Mathematics & Numeracy
- ★ The World Around Us
- ★ Physical Development & Movement
- ★ Religious Education

Children experiencing The N. Ireland Curriculum have the opportunity to develop and acquire the necessary knowledge and understanding to develop skills, concepts, positive attitudes and values in a stimulating environment.

During the year you will have opportunities to find out more about the Primary 1 programme. In the first few weeks of October you will be invited into your child's class to take part in programme specially devised to inform you of tips and strategies to help support your child's learning. It is essential that YOUR child is represented at these sessions.

How will my child learn?

Play is the principal means of learning for young children. This play based curriculum is carefully planned to ensure progression and challenge for each child. The indoor and outdoor activities include:

- Literacy
 - Numeracy
 - Imaginative Play
 - Sand (wet/dry)
 - Art and Craft
 - Construction play
 - Story/rhyme time
 - Games
 - Music
 - ICT
 - Small world play
- And lots more!

Throughout the year we will have visitors to school for example, nurse, fireman, cook, postman etc. We may also have some trips and/or outdoor visits and will welcome help from parents.



What will my child wear?

Our school uniform

Boys

Grey Trousers

Bottle Green School Jumper

White Shirt

Striped School Tie

Black shoes

PE Uniform - Green Shorts, White Polo T shirt, School

Tracksuit Bottoms (Tracksuit Top optional)

School uniform can be purchased from Truly Fare.

Girls

Grey Skirt/Pinafore

Bottle Green School Jumper

White Shirt

Striped School Tie

Black Shoes

Truly Fare 483 Falls Rd, BT12 6DE, Phone:028 90 236374

Please remember that play in school is active and messy, so don't be too upset if your child needs his/her uniform washed mid week!!

For safety reasons children are not permitted to wear open toed sandals or jewellery of any description, in school.

Outdoor play is an important part of our school curriculum. Please ensure that your child always has a coat and sensible shoes. In the summer months it is important that you apply suncream before your child comes to school and that each child has a sunhat.

If your child has a little "accident" in school you will be contacted and asked to come up and either change your child or take him/her home.

Please mark all children's belongings clearly with your child's name.

What happens if my child is ill?

If your child is unwell the best place for him/her is at home.

Please consider your child and him/her friends. If your child is unable to attend, please try to inform the school before 9.00am and send a note on his/her return. If he/she has an infectious illness such as Mumps, Chickenpox etc, please notify us immediately.

Please note we cannot give medication unless under special circumstances.

Table of Incubation and Exclusion periods for infectious illnesses

Illness	Incubation Period	Period of Exclusion
Measles	10-15 days	7 days after rash has gone
Chickenpox	10-14 days	14 days after rash appears
German Measles	14-21 days	Not until advised by Doctor
Mumps	18-21 days	
Whooping Cough	7-10 days	

Pastoral Care

At St Joseph's we aim to provide a nurturing, safe, secure and happy environment where each child can grow in confidence, develop his/her independence, develop self esteem and positive attitudes towards others, school and learning.

Throughout the year daily contact is available with our **Parent Support Coordinator, Caroline Morelli**, who can provide you with information to support your child's learning as well as academic and recreational programmes.

If you have any concerns regarding your child's safety or well-being you should contact the designated Child Protection officers, **Mr McCann & Ms McAllister**. Such concerns will be treated with confidentiality.





What happens if my child misbehaves?

The rules and behaviour we wish to promote include

Be kind to
others

Look after all
of our things

Listen
carefully

Share and
take turns

Enjoy ourselves
Be happy!

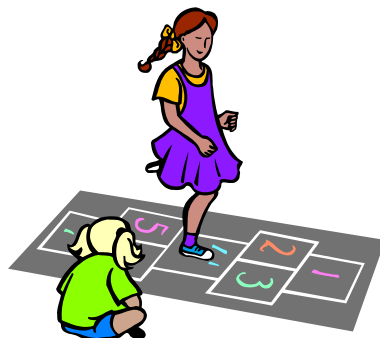
We in St. Joseph's strive to promote close relationships of trust and mutual respect. We praise, reward and encourage positive behaviour at all times. Staff will set a good example, treating children with respect at all times. We would ask parents to support us in helping to manage your child's behaviour in school.

In the case of persistent, unacceptable behaviour the teacher will discuss the matter with the parents.

Reasonable force to control a child may be required to prevent the child harming him/herself/other children/adults.

Such incidents rarely occur.

Copies of the Child Protection and Pastoral Care Policies are available for parents to read.





Photographs/Video

Throughout the year we take photographs of children engaged in meaningful learning experiences or for local press. This provides a record of children's progress and also is the basis of quality language opportunities.

From time to time we may use some photographs/videos to promote the work of the school through parent evenings. We DO NOT give any copies of photographs to anyone other than the child's own parent.

Photos/Videos of school staff and pupils MUST NOT be uploaded to social media or You tube. This rule MUST be adhered to as infringements will be reported to the police.

Children should always be closely monitored if they are users of social media.

On occasion children may be photographed/filmed for local media or educational groups e.g. EA, Department of Education, Translink etc



Helping your child prepare for school

All children are different and some are naturally more independent than others. Helping your child to be as independent as possible before she/he goes to school is very important. Independence develops confidence and the child who is independent and confident will deal much better with life than the child who has to depend on someone else for his/her every need.

Talk to your child in a positive way about school – the school is a happy place, new friends, things to play with, stories, things to do, places to visit.

Make sure that she/he can ask to go to the toilet in a polite and understandable way and can use the toilet properly.

Encourage your child to be independent – dress and undress themselves, wash and dry hands after toileting, remembering to flush the toilet and to wash and dry hands after use.

Encourage your child to complete a task and to tidy up and to care for his/her personal belongings.

Familiarise your child with his/her teacher's name and visit the school before starting.

FINALLY

Make sure the school knows about any particular fears, allergies, medical or family problems that might stop your child from settling in quickly. It is important that you complete the information sheet which you will receive prior to starting school. All this information will be treated in the strictest confidence and can be invaluable to the teacher to know and understand your child. If you have any worries or concerns, please do not hesitate to contact the staff.

It is important to sort out little problems before they become major problems!

